

## USBC-L1 Installation Option one



**1** Plug the cable to the bottom of the usb charging.



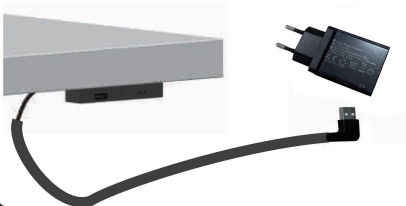
**2** Put the product at the suitable position of the bottom of table directly, fixed with self-tapping screws.



**3** After fixation, check whether the interface connection is firm.



**4** Connect the USB port to the adapter.



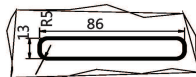
**5** Connect the adapter plug into the intended electrical socket.



## USBC-L1 Installation Option two



**1** Open a rectangle hole in the table.



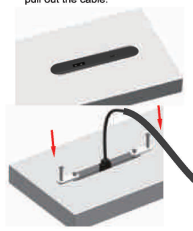
**2** Plug the cable to the bottom of the usb charging.



**3** Put the product together with the cable into the hole.



**4** Fixed on the bottom of table with screws, pull out the cable.



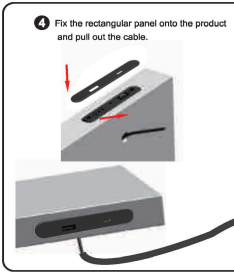
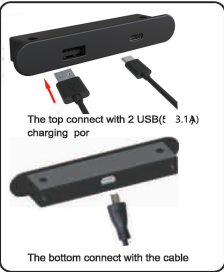
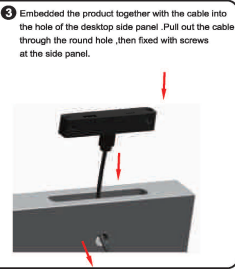
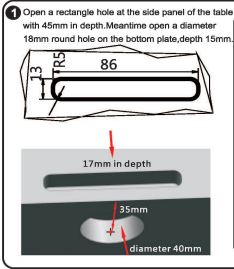
**5** Connect the USB port to the adapter.



**6** Connect the adapter plug into the intended electrical socket.



# USB-C-L1 Installation Option three



# USB Charger User Manual